

# TECHNOVIBE

## Model BV7B



Designed and manufactured in our factory in Melbourne and offered with a 5 year warranty the Technovibe range offers entry level pricing with a variety of upgradeable options (see over page). This machine is a full industrial duty bowl machine capable of performing all the usual surface finishing operations using a

variety of medias and chemicals. From vigorous de-burring to gentle state of the art polishing.

All machines are supplied with an IP65 rated variable speed control unit that allow the machine to operate from a conventional single phase outlet.

## Basic

### Specifications

Model	Capacity Litres	Bowl Dia (mm)	Trough Section (mm)	Overall Height (mm)	Motor kW	Ship Wt. kg
BV7B	200	980	325 X 400	980	0.75	220

# Detailed

## Technical Specifications

### Work Chamber:

The precision engineered, steel fabricated chassis which carries our powerful, purpose designed, vibratory motors, is stress relieved after machining and totally encased in a revolutionary hot cured polyurethane shell. Featuring a **minimum wall thickness of 35mm**, Shore hardness on wear areas is 65D with a UTS of 30MPa and UE of 450%.

### Base:

Cast in one piece from a specially formulated polyurethane the base is non corrosive and virtually indestructible.

### Motor:

Direct, flange mounted vibration motor. Housed as an integral part of the machine, this specially constructed unit is designed for use on either 220/230V/1ph/50-60Hz supply. Nominal rating is 0.75kW.

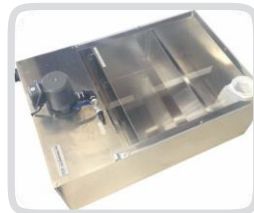
### Control Unit:

IP65 rated programmable control unit that is designed to allow the machine to operate from a single phase mains input. The unit allows variable process control speeds. Forward and reverse functions and incorporates a mains isolator.

## Options



Fixed to bowl sound/splash control lid.



Compound re-cycling system complete with basic solids filtration. Fitted with single phase pump and under over baffle plates.



Compound & water dosing system. Incorporating adjustable water flow meter and chemical dosing pump allowing precise regulation of water and compound to the finishing process.

**Contact: BV Surface Technologies (Thailand) Co., Ltd**

1979 Moo 9 Soi Sukhumvit 109, North Samrong, Samutprakarn 10270, Thailand

PH: +66 2 393 1593 Fax: +66 2 393 7513 Email: [info@bvstt.com](mailto:info@bvstt.com) Web: [www.bvstt.com](http://www.bvstt.com)